

# Pewee Valley: Central Park Demonstration Project

Vision: including examples of several stormwater BMPs in a new community park behind the city hall.

Approximately 1 acre site – formerly a vacant lot



100ft  
50m



# Pewee Valley Information

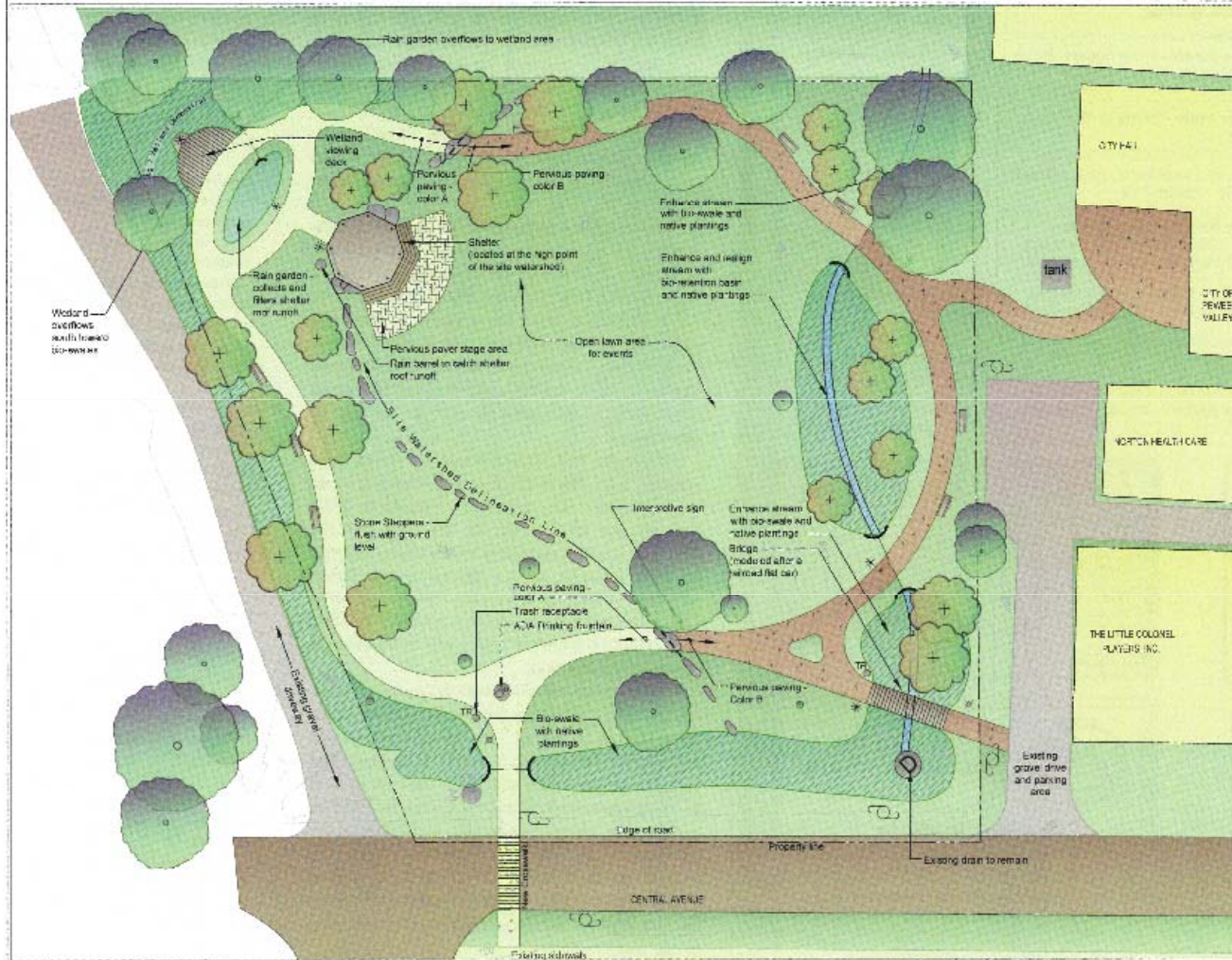
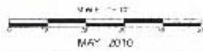
- Located in Oldham County near Louisville
- Area: approximately 1.9 square miles
- Largely suburban residential
- Approximately 600 homes
- Approximately 1400 residents

# PEWEE VALLEY PARK

Pewee Valley, KY

## MASTER PLAN

**environs inc.**  
landscape architecture



- ### LEGEND
- Existing tree to remain
  - Existing Utility Pole
  - Existing Utility City Well
  - Existing Column
  - Existing Downside Street Light
  - Existing Property Line
  - Existing Contour
  - New Tree
  - New Stone Steppers - flush with ground level
  - New Inexpensive Signage
  - New Lightpole
  - New Trash Receptacle
  - New Bench
  - New Concrete Stone Headstap

- ### PLAN FEATURES
1. This plan incorporates the proposed site plan, landscape architecture and parking lot across Central Avenue and the walking path system.
  2. It incorporates water quality management concepts such as bio-swales. New retention areas, a rain garden and a bioswale. DEMONSTRATOR AREA: 1. Retain a new, semi-circular, bio-swale about 10' wide and 12" deep, with a 10' radius. It is plan on the east side of the stream to form a meander. 2. bio-swales and 3. a retention area to both retain and screen the water before it goes to the existing stream. 3. The park site material is combined as a mix of stone steps that are flush with ground level for water to flow. The bio-swales are high point of the site are new on-site. Retain in new concrete. 4. A walking path to stream and two rows of stone are proposed one for each side of the site. The stone is to be used to create a natural looking edge. The path intersects the stream at the edge of the stone steps. A single stone at the end of the path that is intended to resemble a natural face. 5. A stone table and bench is shown at the high point of the site with broad steps overlooking a large area and open lawn for water gathering. 6. The water flow direction is shown by the arrows. 7. The water flow direction is shown by the arrows. 8. The water flow direction is shown by the arrows.











# PEWEE VALLEY PARK

Pewee Valley, KY

## MASTER PLAN



SCALE: 1" = 10'



MAY 2010

