

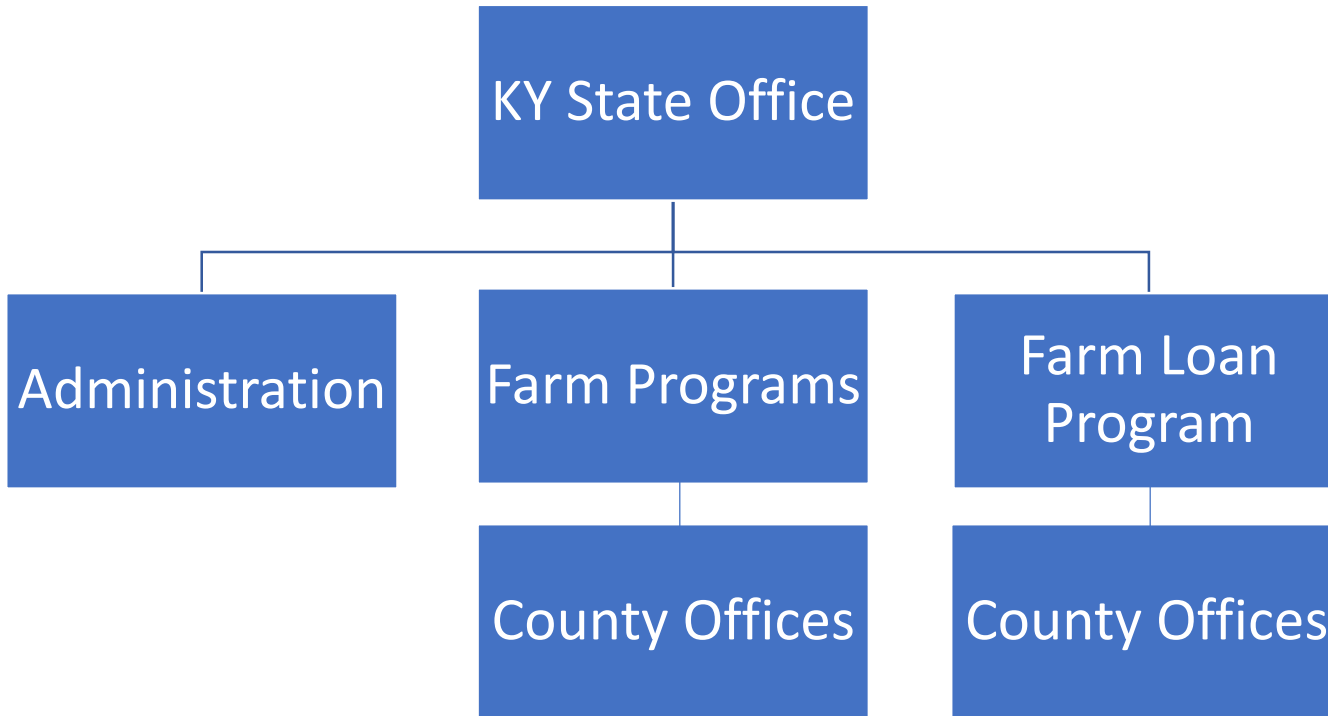
Conservation Reserve Program (CRP)



**Farm
Service
Agency**

fsa.usda.gov

Kentucky Farm Service Agency



**Farm
Service
Agency**

fsa.usda.gov

Annual CRP Funds

Top 10 Counties in Ky

1. Christian	\$3,489,311.00
2. Logan	\$3,112,014.00
3. Warren	\$2,715,876.00
4. Hart	\$2,199,946.00
5. Webster	\$1,884,320.00
6. Green	\$1,602,003.00
7. Graves	\$1,291,565.00
8. Adair	\$946,321.00
9. Todd	\$920,804.00
10. Crittenden	\$911,767.00

**Grand Total for all counties:
\$32, 826,401.00**

**198,438 Acres
Across the State of
Kentucky**



**Farm
Service
Agency**

fsa.usda.gov

What is CRP?

- **Voluntary Program**
- **Remove environmentally sensitive land from agricultural production**
- **Contracts are 10-15 years in length**



**Farm
Service
Agency**

fsa.usda.gov

What's New for CRP?

- **2018 Farm Bill Changes**
- **8.6 Million Acre Goal**
- **Priority for CRP – Water Quality**



**Farm
Service
Agency**

fsa.usda.gov

Why is CRP Important?

- **Improve water quality**
- **Prevent soil erosion**
- **Reduce loss of wildlife habitat**



**Farm
Service
Agency**

fsa.usda.gov

How can CRP help protect wildlife ?

- **By Creating habitats**
- **Providing a food source**
- **Helps keep the ecosystem in balance**



**Farm
Service
Agency**

fsa.usda.gov

CRP Signup Options

- **General Signup**
- **Continuous Signup**
- **Grasslands Signup**



**Farm
Service
Agency**

fsa.usda.gov

Land Eligibility

- **Eligible Cropland**
 - Cropping History 4 out of 6 years from 2012-2017
 - Conserving Use Land
 - Land must be physically and legally capable of being planted in a normal manner to an agricultural commodity
- **Marginal Pastureland**
 - Not currently cropped and owner provides written
 - Owner requests to reclassify as marginal pasture land
 - Location of land



**Farm
Service
Agency**

fsa.usda.gov

Producer Eligibility

- **Owner/Operator**
 - Owned the land for 12 months before:
 - the close of signup for general signup and CRP grasslands offers.
 - before submitting the offer for continuous signup.
 - Landlord Tenant Provisions
 - Acquired the land by will or succession as a result of death



**Farm
Service
Agency**

fsa.usda.gov

CRP Payments

- **Rental Payments**
 - Rental rates based on the relative productivity of the soils within in county
 - Also the average cash rent using data provided by the National Agricultural Statistics Service (NASS)



**Farm
Service
Agency**

fsa.usda.gov

Cost Share Assistance

- **Cost share of up to 50% of the reimbursable cost of installing the practice**
- **Signing Incentives**
- **Practice Incentives**



**Farm
Service
Agency**

fsa.usda.gov

General Signup

- **Enrollment**

- Offered annually during announced enrollment periods
- Offers are ranking according to EBI



**Farm
Service
Agency**

fsa.usda.gov

General Signup

• Environmental Benefits Index

- Wildlife habitat benefits resulting from cover on contract acres
- Water quality benefits from reduced erosion, runoff and leaching
- On-farm benefits from reduced erosion
- Benefits that will likely endure beyond the contract period
- Air quality benefits from reduced wind erosion
- Cost



**Farm
Service
Agency**

fsa.usda.gov

Continuous Signup

- **Enrollment**

- Environmentally sensitive land
- May be offered for enrollment at any time

- **Practice Examples**

- CP-8A Grassed Waterway
- CP-9 Shallow Water Area for Wildlife
- CP-21 Filter Strip
- CP-22 Riparian Buffer
- CP-29 Marginal Pastureland Wildlife Habitat Buffer
- CP33 Habitat Buffer for Upland Birds



**Farm
Service
Agency**

fsa.usda.gov

Grasslands Signup

- **Created by 2014 Farm Bill, reauthorized by the 2018 Farm Bill**
- **Limit – up to 2 Million Acres**



**Farm
Service
Agency**

fsa.usda.gov

Grasslands Signup

- **No cropping history requirements**
- **Haying and/or grazing or harvesting for seed production is allowed subject to the CPO**
- **Is a production based program**
- **Will pay for cross fencing and livestock water development**



**Farm
Service
Agency**

fsa.usda.gov

Water Quality Practices



**Farm
Service
Agency**

fsa.usda.gov

Grassed Waterways CP-8A

- **Practice Purpose**
 - Improve Water Quality
 - Convey runoff without causing erosion or flooding
- **Eligibility Criteria**
 - Must meet Cropland Eligibility 4 of 6 years from 2012-2017



**Farm
Service
Agency**

fsa.usda.gov

Shallow Water Area for Wildlife CP-9

- **Practice Purpose**

- Develop shallow water areas to an average depth of 6 to 18 inches for wildlife
- Provide water for the majority of the year
- Filter strip or riparian buffer established around the pool as part of the CP-9

- **Eligibility Criteria**

- Must meet Cropland Eligibility 4 of 6 years from 2012-2017



**Farm
Service
Agency**

fsa.usda.gov

Filter Strip CP-21

- **Practice Purpose**
 - Trap Sediment
 - Trap and Filter Pollutants
 - Create wildlife habitat



**Farm
Service
Agency**

fsa.usda.gov

Filter Strip CP-21

- **Eligibility Criteria**
 - Must meet Cropland Eligibility 4 of 6 years from 2012-2017
 - Cropland is adjacent and parallel to:
 - Perennial stream
 - Seasonal stream
 - Sinkholes and karst areas
 - Other permanent water bodies that contain water cover all year every year
 - Wetlands (inundated at least 21 days during the growing season)



**Farm
Service
Agency**

fsa.usda.gov

Filter Strip CP-21

- **Size Requirements**
 - Minimum acceptable width is 20'
 - Maximum of width of 120'
- **Vegetation Requirements**
 - Cool Season Grasses/legumes
 - Native Warm Season Grasses/forbs



**Farm
Service
Agency**

fsa.usda.gov

Riparian Buffer CP-22

- **Practice Purpose**
 - Protect surface and subsurface water quality while enhancing the water body ecosystem
 - Create shade and provide detritus for aquatic species
 - Provide habitat for wildlife
- **Eligibility Criteria**
 - Cropland Eligibility
 - Marginal Pastureland Eligibility



**Farm
Service
Agency**

fsa.usda.gov

Riparian Buffer CP-22

- **Cropland Eligibility Criteria**
 - Cropping history 4 of 6 years 2012-2017
 - Cropland is adjacent and parallel to:
 - Perennial stream
 - Seasonal stream
 - Sinkholes and karst areas
 - Other permanent water bodies that contain water cover all year every year
 - Wetlands (inundated at least 21 days during the growing season)



**Farm
Service
Agency**

fsa.usda.gov

Riparian Buffer CP-22

- **Marginal Pastureland Eligibility Criteria**
 - Area not cropland, forestland, or woodland
 - Marginal Pasture is adjacent and parallel to:
 - Perennial stream
 - Seasonal stream
 - Sinkholes and karst areas
 - Permanent water bodies that contain water cover all year every year and provide at least seasonal flow of surface water from the water body off of the farm



**Farm
Service
Agency**

fsa.usda.gov

Riparian Buffer CP-22

- **Size Requirements**
 - Minimum acceptable width is 35'
 - Maximum of 180' width
- **Vegetation Requirements**
 - At least 3 hard mast species equally distributed by numbers shall comprise $\geq 80\%$ of the stand
 - Planting rate between 605 and 681 trees/ac
 - Grass Strip if needed shall contain at least one grass and at least one legume or forb



**Farm
Service
Agency**

fsa.usda.gov

Marginal Pastureland Wildlife Habitat Buffer CP-29

- **Practice Purpose**
 - Protect surface and subsurface water quality while enhancing the waterbody ecosystem
 - Restore native plant communities
 - Enhance wildlife habitat



**Farm
Service
Agency**

fsa.usda.gov

Marginal Pastureland Wildlife Habitat Buffer CP-29

- **Marginal Pastureland Eligibility Criteria**
 - Area not cropland, forestland, or woodland
 - Marginal Pasture is adjacent and parallel to:
 - Perennial stream
 - Season stream
 - Sinkholes and karst areas
 - Permanent water bodies that contain water cover all year every year and provide at least seasonal flow of surface water from the water body off of the farm



**Farm
Service
Agency**

fsa.usda.gov

Marginal Pastureland Wildlife Habitat Buffer CP-29

- **Size Requirements**
 - Minimum acceptable width is 20'
 - Maximum of width of 120'
- **Vegetation Requirements**
 - Mix of grasses, shrubs and forbs



**Farm
Service
Agency**

fsa.usda.gov

Habitat Buffers for Upland Birds CP-33

- **Practice Purpose**

- Provide food and cover for quail and upland birds in a cropland area and improve water quality
- Reducing soil erosion from wind and water
- Increasing soil and water quality
- Enhancing the on-farm ecosystem



**Farm
Service
Agency**

fsa.usda.gov

Habitat Buffers for Upland Birds CP-33

- **Eligibility Criteria**
 - 4 of 6 years cropping history from 2012-2017
 - Around Cropland field edges
 - Whole fields shall not be enrolled
 - Fields less than 5 acres shall not be enrolled



**Farm
Service
Agency**

fsa.usda.gov

Habitat Buffers for Upland Birds CP-33

- **Size Requirements**
 - Minimum acceptable width is 30'
 - Maximum of average width of 120'
- **Vegetation Requirements**
 - Mix of grasses, shrubs and forbs



**Farm
Service
Agency**

fsa.usda.gov

Management Practices

- **The management activity must be designed to ensure plant diversity and wildlife benefits, while ensuring protection of the soil and water resources.**



**Farm
Service
Agency**

fsa.usda.gov

CRP Management Activities

Many types of Management Activities...

Light Disking



Grazing



Prescribed Mowing



Prescribed Burning



Interseeding /
Overseeding



**Farm
Service
Agency**

fsa.usda.gov

Practice Maintenance

- **Practice maintenance is participant's responsibility**
- **NRCS must include required maintenance in conservation plan**
- **After cover installation, maintenance must be outside primary nesting season (PNS)**
- **The following are prohibited:**
 - cosmetic mowing
 - recreational mowing
 - annual mowing not generic purposes



**Farm
Service
Agency**

fsa.usda.gov

Helping People Help the Land



**Farm
Service
Agency**

fsa.usda.gov

Any Questions?



**Farm
Service
Agency**

fsa.usda.gov